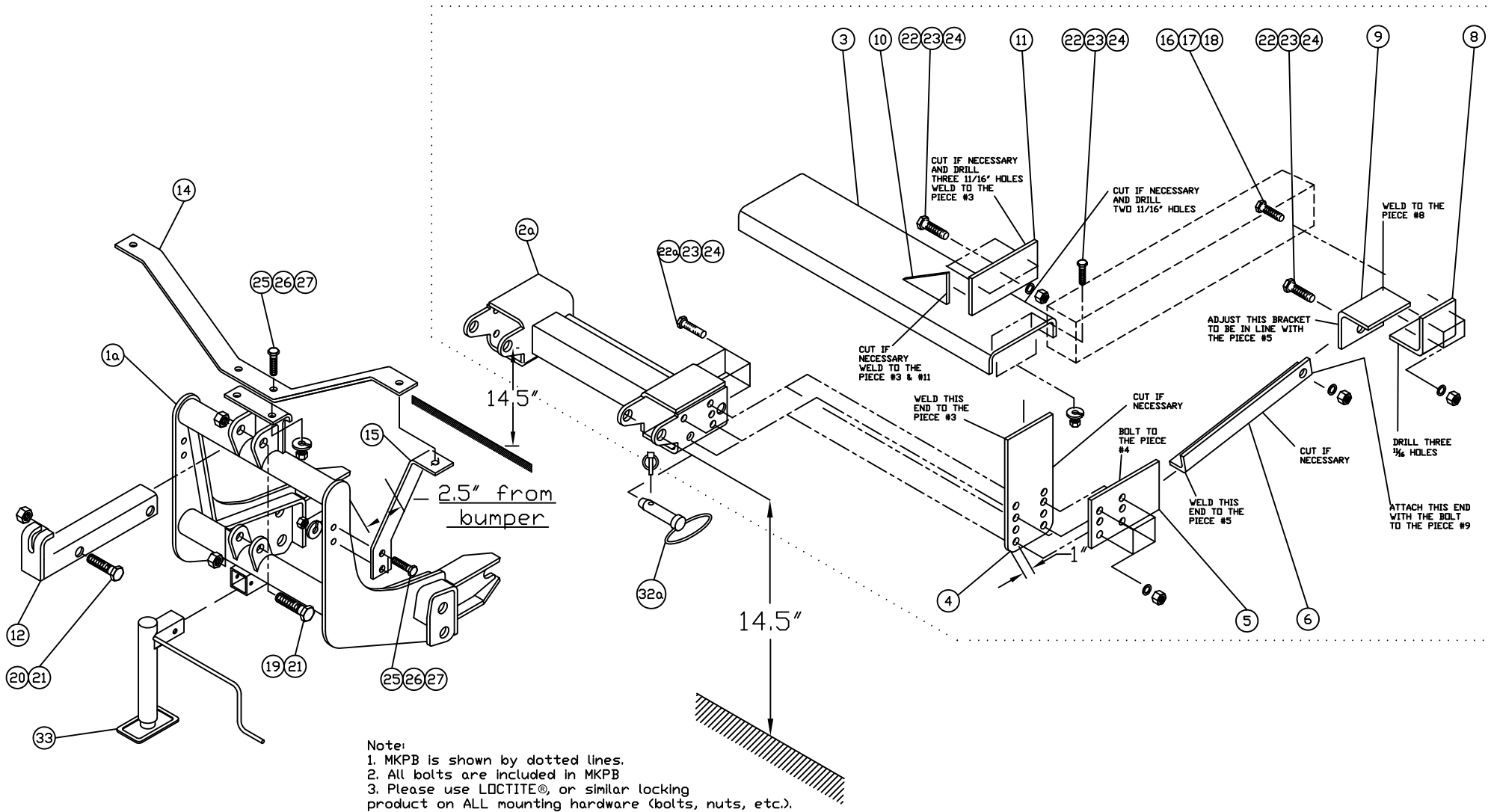


MOUNTING KIT

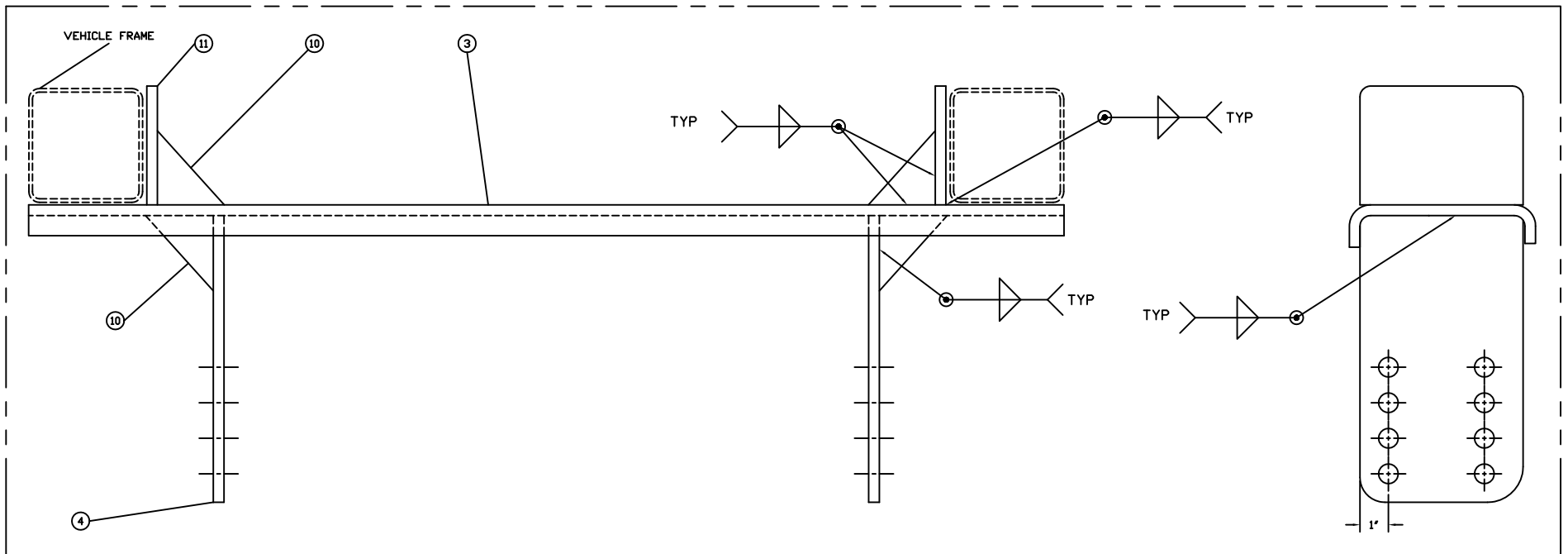
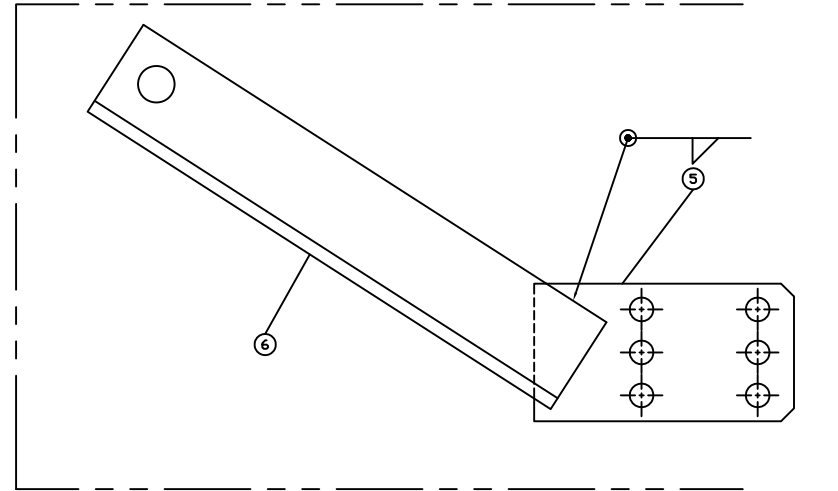
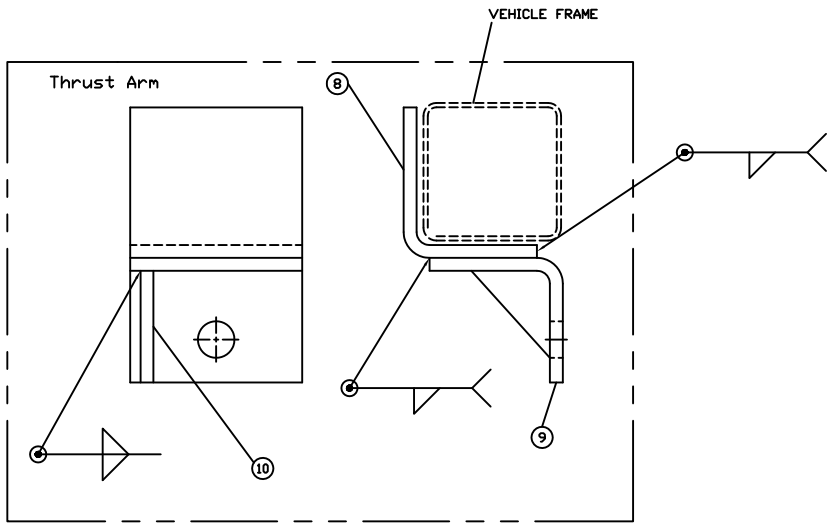
53043-MKPB

Universal Kit for Full Size Trucks

MOUNTING KIT 53043-MKPB-QLII



**MOUNTING KIT
53043-MKPB**



Note:

1. Your mounting kit and thrust arm may look like as shown on the drawing.
2. Material is 44W low carbon steel. All welds must be minimum $\frac{1}{4}$ " fillet welds (all joints are to be fully welded all around) if properties of material for the welding wire is same as properties of material.

Arctic Equipment Manufacturing Corporation
Mounting kit 53043-MKPB

53043-MKPB R04
INST0073

Mounting Kit 53043-MKPB								
Item	Part #	Description	MKPB	MKPB-QLII	QL-MKB	QLII-MKB	QLII-HI	QLII-HI-DLC
1	52162-C	Lift Frame			1			
1a	53170-D-GA	Lift Frame, QUIK*LINK ® II Galvanized				1		
1b*	53171-D-GA	Lift Frame, QUIK*LINK ® II-HI Galvanized					1	
2	52166-C	Spreader Bar	1					
2a	52363-C	Spreader Bar QLII		1				
3	53047-B	Cross Member Channel		1				
4	53048-B	Side Plate		2				
5	53049-A	Thrust Arm Plate		2				
6	53050-01-B	DS Thrust Arm Angle		1				
7*	53050-02-B	CS Thrust Arm Angle		1				
8	53060-B	Thrust Arm Mounting Bracket		2				
9	53060-01-B	Thrust Arm Angle Plate		2				
10	52215-03-C	3/8x3x3 Gusset		10				
11	53051-A	Frame Plate		2				
12	50069-C-GA	Lift Channel Galvanized			1			
13*	52612-B-GA	Lift Channel (2" cylinder) Galvanized					1	

Arctic Equipment Manufacturing Corporation
Mounting kit 53043-MKPB

53043-MKPB R04
 INST0073

Mounting Kit 53043-MKPB								
Item	Part #	Description	MKPB	MKPB-QLII	QL-MKB	QLII-MKB	QLII-HI	QLII-HI-DLC
14	52209-B-GA	Light Antler Galvanized				1		
15	52208-B-GA	Light Brace Galvanized				2		
16	HH-00972-147	3/4-16x2 Hex Head Cap Screw		2				
17	HH-00457-008	3/4 Lock washer		2				
18	HH-00460-007	3/4-16 Hex Nut		2				
19	HH-00972-153	3/4-16x3.1/2 Hex Head Cap Screw		2				
20	HH-00972-149	3/4-16x2.1/2 Hex Head Cap Screw		1				
21	HH-00973-007	3/4-16 Nylon Insert		3				
22	HH-00972-129	5/8-18x1.3/4 Hex Head Cap Screw		16				
22a	HH-00972-130	5/8-18x 2 Hex Head Cap Screw		8				
23	HH-00457-003	5/8 Lock washer		24				
24	HH-00460-001	5/8-18 Hex Nut		24				
25	HH-00972-090	1/2-20x1.1/2 Hex Head Cap Screw		6				
26	HH-00457-001	1/2 Lock washer		6				
27	HH-00460-002	1/2-20 Hex Nut		6				
28*	HH-00293-006	1/4" x 1" Cap screw		4				
29*	HH-00341-002	1/4" Flat washer		4				
30*	HH-00457-006	1/4" Lock washer		4				

Mounting Kit 53043-MKPB								
Item	Part #	Description	MKPB	MKPB-QLII	QL-MKB	QLII-MKB	QLII-HI	QLII-HI-DLC
31*	HH-00294-001	1/4" Hex nut		4				
32	WA-34704-M	Mounting Pin, QLI Ass'y			2			
32a	52348-M	Mounting Pin Assembly					2	
33	52373-M	Jack Assembly					1	
34*	50999-B	Blade guides				2		
35*	HH-00972-155	3/4" x 4" UNF Cap screw						2

QUIK*LINK is a trademark of Arctic Equipment Manufacturing Corporation

Note: * These items are not shown on the drawing.

GENERAL INFORMATION

Customer must be aware of following:

Warranty for installation errors and omissions shall be the responsibility of the selling dealer. Arctic Equipment Manufacturing Corporation will not be responsible for any damage caused by improper installation by others.

Arctic Equipment Manufacturing Corporation (Arctic) does not assume liability for damage to your motor vehicle resulting from the attachment or use of an Arctic snowplow. The purchaser assumes all vehicle risk associated with the attachment and operation of this snowplow.

The Arctic snowplow you purchase must be used only on vehicles equipped with the manufacturer's snow plow preparation package. Snow plowing without the original plow preparation package may damage your vehicle. The added weight may impair the operation and control of your vehicle. Snow plowing with a vehicle not recommended for that purpose by the manufacturer may void your new vehicle warranty. If your vehicle is not equipped with an original snow plow preparation package, additional equipment may be necessary before snow plowing. Please consult your vehicle and snowplow dealers prior to the purchase and installation of the snowplow. The installation of such parts however is not a full substitute for the original equipment snowplow preparation package.

Before drilling any holes in the firewall or frame, move brake lines, fuel lines and/or electrical wiring from the path of the drill. Brake and fuel lines must also be clear of any fasteners.

All bolts should be installed from the inside of the truck frame so that the lock washers and nuts are accessible for re-tightening.

If a slotted hole in the truck frame is utilized, then a flat washer must be used under the bolt head. If a flat washer is used under a lock washer use LOCTITE #242. Also use this LOCTITE #242 if existing (vehicle) bolts and nuts are used.

Do not tighten any bolt assemblies until all fasteners and components are installed, unless otherwise specified.

After first use, re-tighten all mounting bolts, thereafter check mounting bolt tightness periodically.

Before proceeding, read instructions carefully and familiarize yourself with the components and hardware.

INSTALLATION INSTRUCTIONS



1. Install the spreader bar (2a) to the lift frame (1a)(1b) and move that assembly toward the truck. The spreader pin hole should be 14 1/2" (+/- 1/2") off of the ground and the lift frame must be 2.5" from the bumper.
2. Clamp the cross member channel (3) to the bottom of the frame as close as possible to directly over the spreader bar (2a). Place frame plates (11) against side of frame rail above cross member channel (3). If there are holes through the frame rails drill the

plates to match. If there are no holes in frame rails drill through both the rails and plates. There must be 3 holes per side. If the frame is of suitable construction 2 additional holes may be drilled up through the cross member (3) and into the bottom of the frame rail. Tack the frame plates (11) to the cross member channel (3).

3. Place the side plates (4) against the ends of the spreader bar (2a) and slide them up against the bottom of the cross member channel (3). The side plates (4) may need to be trimmed in order for the spreader bar (2a) to align with the side plate holes and still remain at 14.5 " from ground. Be sure that the side plates (4) are trimmed evenly (to keep the spreader bar level) and are the same distance in from the ends of the cross member channel (3) (to keep the spreader bar (2a) centred). Tack the side plates (4) to the cross member channel (3).
4. Remove the assembly and weld fully. Gussets (10) are provided for extra strength.
5. Paint assembly then reinstall and finger tighten the bolts.
6. Install thrust arm plates (5) on spreader bar bolts. Clamp thrust arm mounting brackets (8) on frame approximately 18" back from the cross member assembly. Drill holes in the frame using the thrust arm mounting brackets as a guide. Clamp thrust arm lower angle (9) to the thrust arm mounting brackets (8) while making sure to keep the upright leg in the same plane as the thrust arm plates (5). Fit the thrust arms (6) between the thrust arm plates (5) and the thrust arm lower angle (8) using a bolt assembly at the rear (the thrust arms may need to be trimmed). Clamp the thrust arms (6) to the side plates (4). Tack the thrust arm lower angles (9) to the thrust arm mounting brackets (8). Tack the thrust arms (6) to the thrust arm plates (5).
7. Remove assemblies and weld fully.
8. Paint assemblies then reinstall.
9. Install all bolts and torque all fasteners according to torque chart.
10. Install lift frame (1a) (1b). Slide inside of spreader bar (2a). Insert mounting pin (31a) in the top holes of the spreader bar (2a).
11. Install light antler (14) and light braces (15) using ½" x 1½" bolts (25), ½" lock washers (26) and ½" hex nuts (27). Install lights so that the light mounting stud goes through both antler (14) and the brace (15). Tighten all light mounting hardware.
12. Install lift channel (12) and front mount pump (from hydraulic kit) or hydraulic cylinder to lift frame (1a) (1b) using ¾" x 3½" bolts (19) and ¾" locknuts (21). Use ¾" x 2½" bolts (20) and ¾" locknuts (21) to attach lift channel (12) to front mount

pump or hydraulic cylinder. Do not over tighten this assembly as it must be able to pivot.

13. Use 1/4"x 1" bolt (28), 1/4" flat washer (30), 1/4" lock washer (31) and 1/4" hex nut (29) to fasten blade guides to plow.
14. Return any unused items to the customer so that the vehicle can be returned to its original condition if the snowplow is removed.
15. See separate installation instructions for the hydraulic power unit, wiring and controls.

TORQUE CHART (FT. LB.)		
SIZE	GRADE 5 BOLT 	GRADE 8 BOLT 
1/4 - 28	8	11
5/16 - 24	15	22
3/8 - 24	28	40
7/16 - 20	44	63
1/2 - 20	69	97
5/8 - 18	138	195
3/4 - 16	241	341
<u>Note:</u> Torque values are for plated bolts only		