

Mounting Kit 53917-MKPBX

Jeep Wrangler 2018-2023

Jeep Gladiator 2020-2023

Personal Use Only

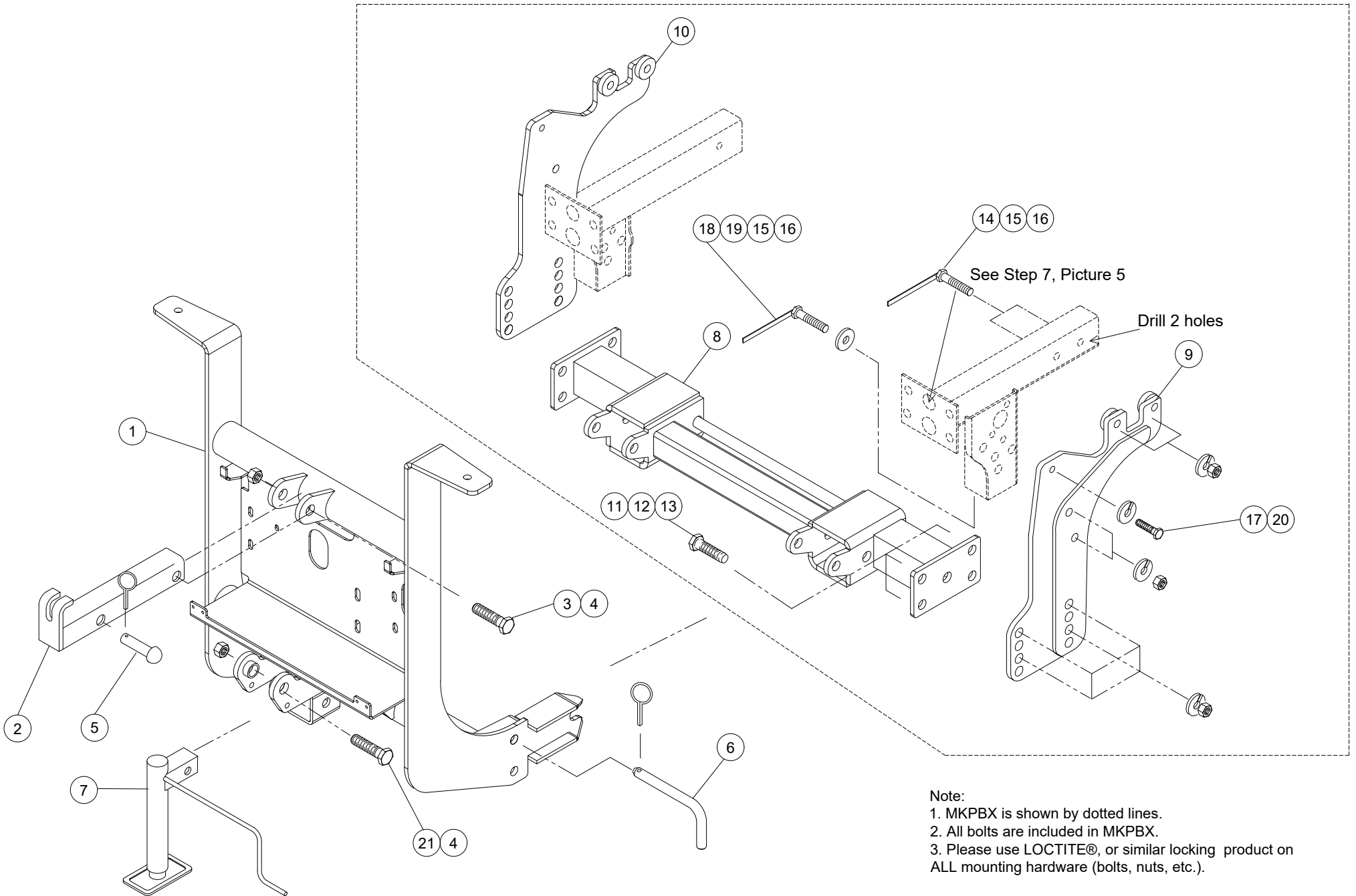
Not to be used on Mojave Package

▲ Warning

Arctic Equipment Manufacturing Corporation (Arctic) does not assume liability for damage to your motor vehicle resulting from the attachment or use of an Arctic snowplow. The purchaser assumes all vehicle risk associated with the attachment and operation of this snowplow. The Arctic snowplow you purchase must be used only on vehicles equipped with the manufacturer's snow plow preparation packages. Snow plowing without the original plow preparation package may damage your vehicle. The added weight may impair the operation and control of your vehicle. Snow plowing with a vehicle not recommended for that purpose by the manufacturer may void your new vehicle warranty. If your vehicle is not equipped with an original snow plow preparation package, additional equipment may be necessary before snow plowing. Please consult your vehicle and snowplow dealers prior to the purchase and installation of the snowplow. The installation of such parts however is not a full substitute for the original equipment snowplow preparation package.

The loaded vehicle, including all aftermarket accessories, the snowplow, passengers and cargo, must not exceed the gross vehicle weight ratings (GAWR), front gross axle weight rating (FGAWR) or rear gross axle weight rating (RGAWR) specified on the Safety Compliance Certification Label located in the driver's side door opening. It is the operator's responsibility to verify that these ratings are not exceeded. The use of rear ballast weight may be required to prevent exceeding the front GAWR.

To determine the Gross Axle Weights for your vehicle, including all aftermarket accessories, the snowplow, passengers and cargo, take your loaded vehicle and the snowplow to a scale. With the snowplow attached, place the front wheels of the vehicle on the scale to get the front gross axle weight (FGAW). To get the rear gross axle weight (RGAW), place the back wheels of the vehicle on the scale.



Note:
 1. MKPBX is shown by dotted lines.
 2. All bolts are included in MKPBX.
 3. Please use LOCTITE®, or similar locking product on ALL mounting hardware (bolts, nuts, etc.).

53917-MKPBX			
Item	Part #	Description	Quantity
1	53613-D	Lift Frame	1
2	50069-C-GA	Lift Channel (1.5" Cylinder)	1
3	HH-00972-153	3/4 x 3 1/2" UNF Cap Screw	1
4	HH-00973-007	3/4" UNF Lock nut	2
5	52757-M	Rivet Assy (rivet & lynch pin)	1
6	1302045	Pin Assembly	2
7	52373-M	Jack Assembly	1
8	53916-D	Spreader Bar	1
9	53915-01-A	Frame Bracket Driver Side	1
10	53915-02-A	Frame Bracket Curb Side	1
11	HH-00972-129	5/8-18 x 1 3/4 HHCS	8
12	HH-00457-003	5/8" Lockwasher	8
13	HH-00460-001	5/8-18 hex nut	8
14	52575-12-A	1/2 -20 x 1 3/4" with 18" welded handle	4
15	HH-00460-002	1/2 -20 hex nut	8
16	HH-00457-001	1/2" lockwasher	8
17	HH-01197-032	M10-1.5 x 35mm 10.9G bolt	2
18	52575-A	1/2-20 x 1 1/2" bolt with 6" welded handle	4
19	HH-00341-006	1/2" flatwasher	4
20	HH-00933-003	10mm lockwasher	2
21	HH-00972-155	3/4 x 4" UNF Cap Screw	1
22*	53917-M-WB	Bolt Bag c/w welded bolts	1

Quick Link is a trademark of Arctic Equipment Manufacturing Corporation.

Items marked with * are not shown on drawing.

Installation Instructions

Before drilling any holes in the firewall or frame, move brake lines, fuel lines and/or electrical wiring from the path of the drill. Brake and fuel lines must also be clear of any fasteners. Do not under any circumstances disable, remove or relocate any sensors or other components related to the operation of the air bags.

General order of installation:

- install all components (mounting bracket, thrust arm and spreader bar) and all fasteners finger tight (snug) through existing holes,
- use removable grade LOCTITE #242 on all bolts,
- drill necessary holes and
- tighten all hardware.

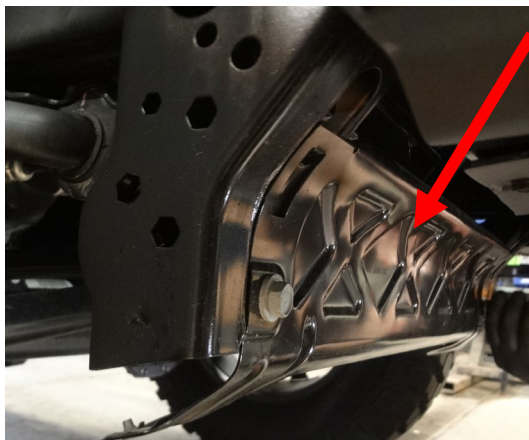
After first use, re tighten all mounting bolts; thereafter check mounting bolt tightness periodically and at the start of the season.

Before proceeding, read instructions carefully and familiarize yourself with the components and hardware.

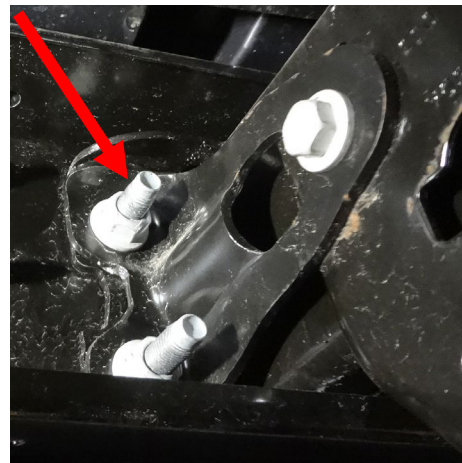
NOTE: It may be necessary, on some vehicles, to use a form of load booster to decrease the vehicle's front suspension sag when snowplows is attached to the vehicle. This can be done with the use of booster springs, supplementary air bags or similar load boosting devices. It is up to the customer to choose and purchase the product that suits this application.

Arctic Equipment Manufacturing reserves the right, under its product improvement policy, to change construction, design details or specifications without notice or without incurring any obligation.

1. Remove the front steel panel as shown in Picture 1, remove the lower splash shield (if equipped) and remove the bumper by removing 4 x bumper bolts on each side as shown in Picture 2.



Picture 1



Picture 2

2. On DS & CS, remove the outside brackets only as shown in Picture 3, return the parts to customer.



Picture 3

3. Install Driver Side frame bracket (9) on the outside of driver side vehicle frame, insert M10 bolt (17) with 10mm flatwasher (20) on the top threaded hole of vehicle frame. Insert ½” bolt with 8” welded handle (18) with ½” flatwasher (19) from the bottom of vehicle’s compatibility bracket, (as shown in Picture 4) and secure it with ½” lockwasher (16) and ½” hex nut (15). Follow the same procedure for CS frame bracket (10).



Picture 4

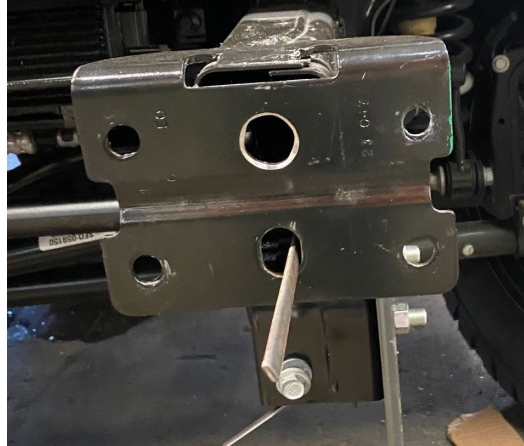
4. Insert the spreader bar (8) in between DS frame bracket (9) and CS frame bracket (10). Jack the spreader up till it aligns with holes in DS and CS frame brackets. Insert 5/8” bolts (11) and secure it with 5/8” lockwashers (12) and 5/8” hex nut (13).

5. Make sure that spreader bar (8) is levelled before doing this step. Make sure that DS and CS frame bracket (9)(10) are properly flushed to vehicle frame.

Using two rear hole on DS and CS frame bracket as guides, drill 2 x 9/16” holes at the rear of vehicle frame (see picture 6)

6. Open up the top holes (upto 1”, see picture 5) on each side on bumper bracket at front of vehicle frame.

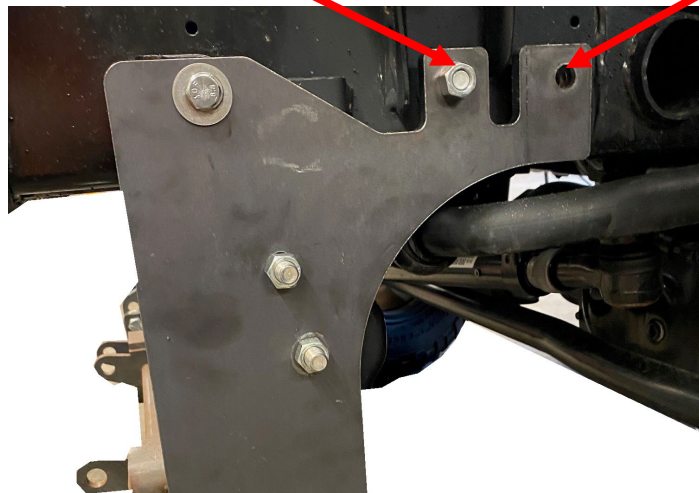
Insert 2 x ½” bolts with welded handle (14) at the rear holes of DS and CS frame bracket (9)(10) through those two holes shown on picture 6. Secure welded bolts with ½” lockwasher (16) and ½” hex nut (15).



Picture 5

Use bottom hole on bumper bracket
Drill this hole

Use top hole on bumper bracket



Picture 6

8. Bumper and splash shield (if equipped) can be inserted back on the vehicle.
9. Torque all the fasteners according to the torque chart.
10. Return any unused items to the customer so that the vehicle can be returned to its original condition once the snowplow is removed.
11. See separate installation instructions for hydraulic power unit, wiring and controls.

Suggested torque value for bolts				
Thread Size	Grade 5		Grade 8	
	Dry (ft. lb)	Oiled (ft.lb)	Dry (ft. lb)	Oiled (ft.lb)
¼-20	8	6	12	9
¼-28	10	7	14	11
5/16-18	17	13	24	18
5/16-24	19	15	27	21
3/8-16	31	24	44	34
3/8-24	35	27	49	38
7/16-14	49	38	70	54
7/16-20	55	42	78	60
½-13	75	58	105	82
½-20	85	65	120	90
5/8-11	150	115	210	165
5/8-18	170	130	240	185
¾-10	270	205	375	290
¾-16	295	230	420	320
7/8-9	395	305	605	455
7/8-14	435	335	670	515
1-8	590	455	905	695
1-14	660	510	1030	785

Arctic Equipment Manufacturing Corporation reserves the right under its product improvement policy to change construction or design details and furnish equipment when so altered without reference to illustrations or specifications used herein.

